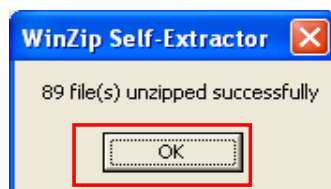
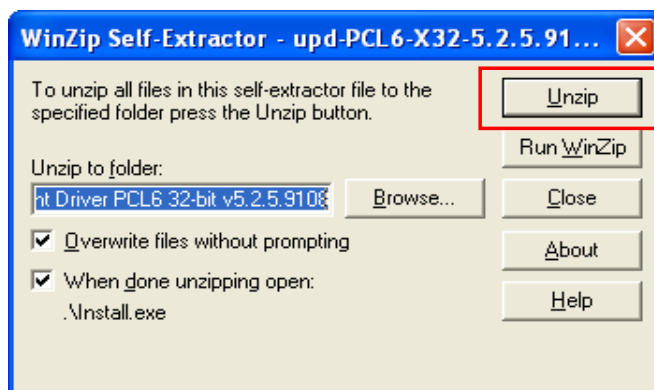
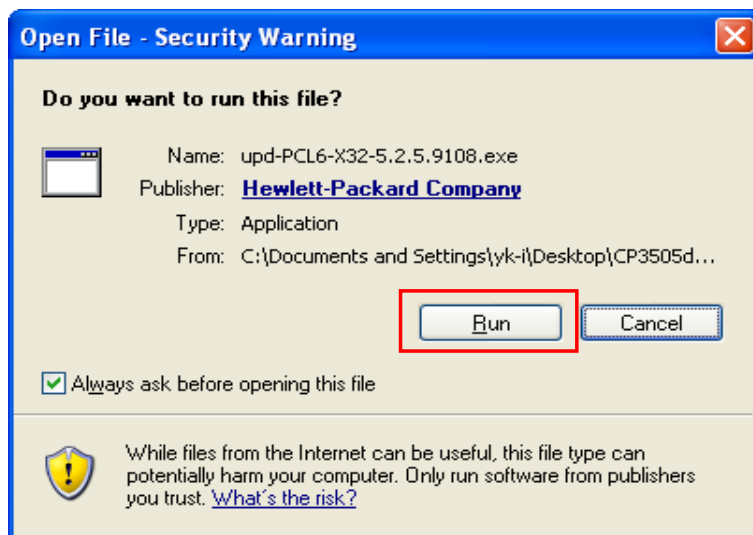


## <Install printer driver of HP CP3505dn>>

For Win XP

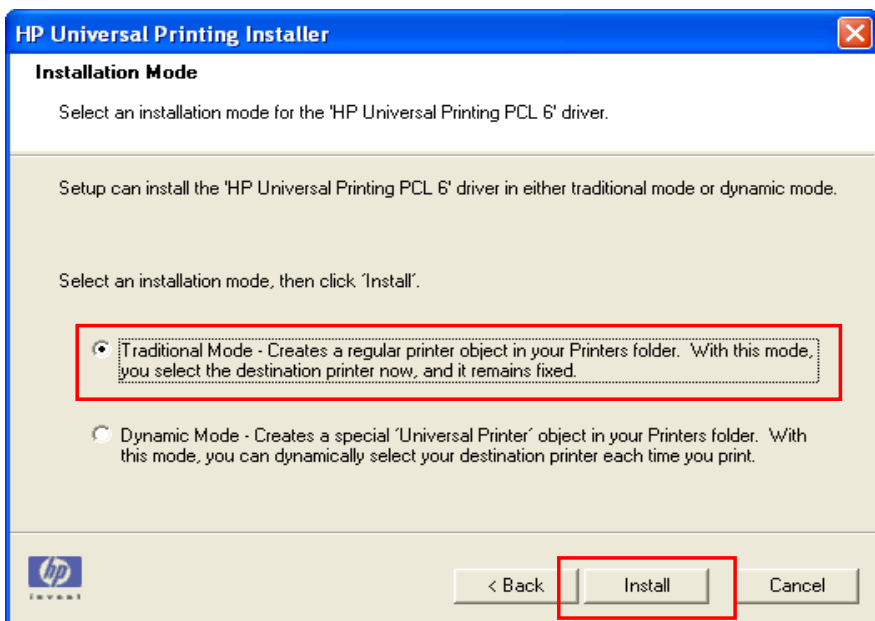
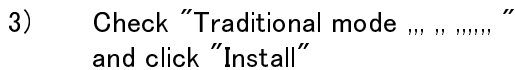
Download & Unzip-----

- 1) Unzip the Downloaded file from HP site.

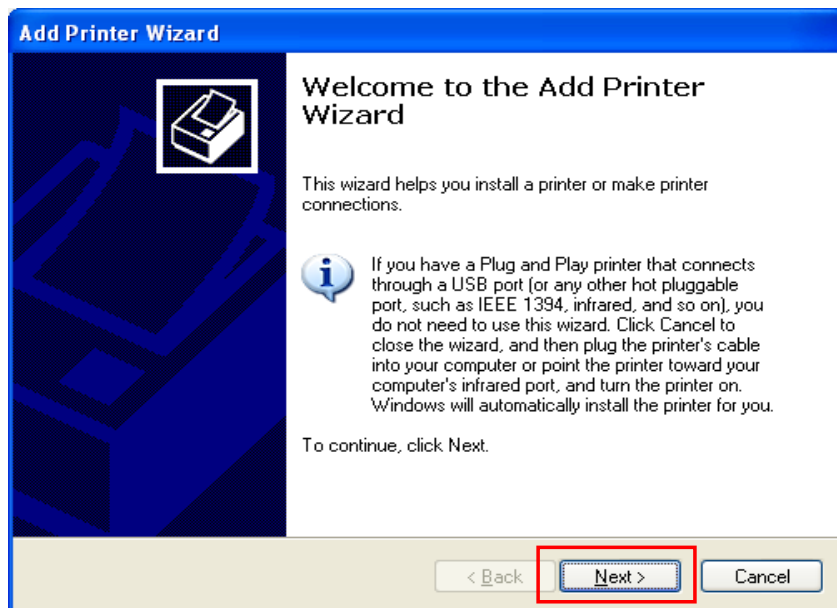


2) Click "YES"

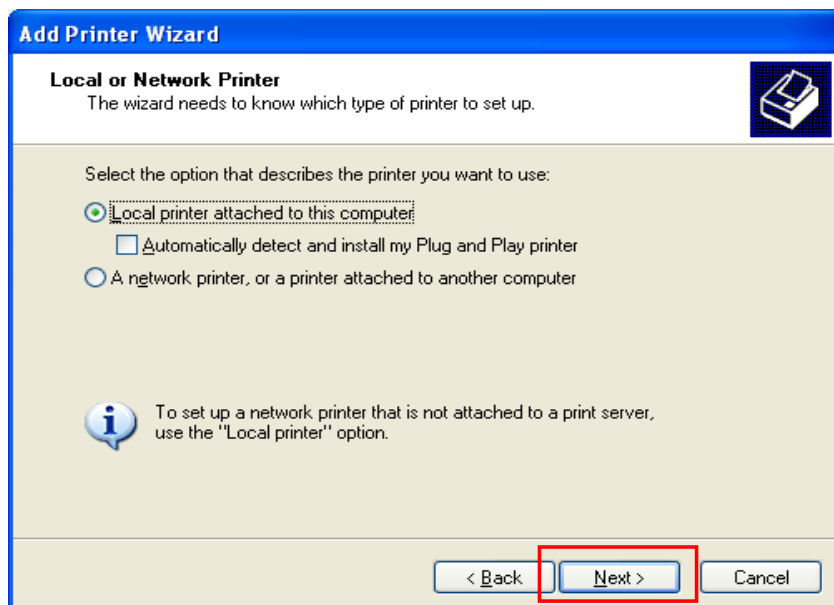
2) Click "YES"



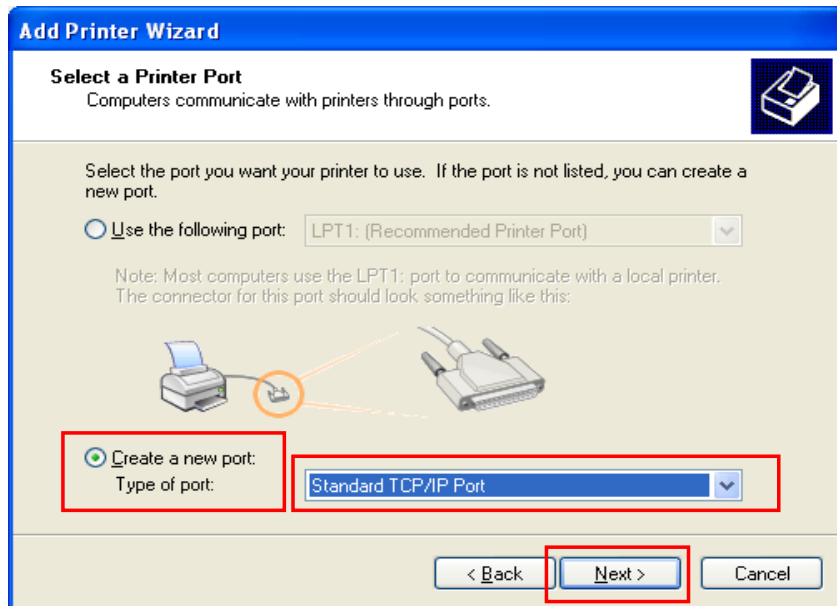
- 4) Click "Next"



- 5) Check on "Local printer attached to this computer" check off "Automatically detect and install my Plug and Play printer" and click "Next"



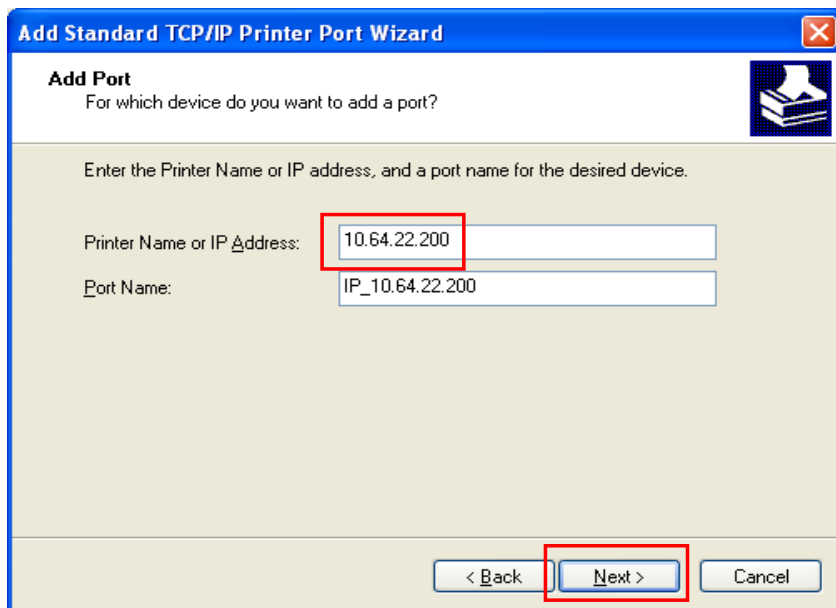
- 6) Check on "Cerate a new port", select "Standard TCP/IP Port" and click "Next"



- 7) Click "Next"



- 8) Type **10.64.22.200** in "Printer Name or IP Address" text box and click "Next"



**Add Standard TCP/IP Printer Port Wizard**

**Add Port**  
For which device do you want to add a port?

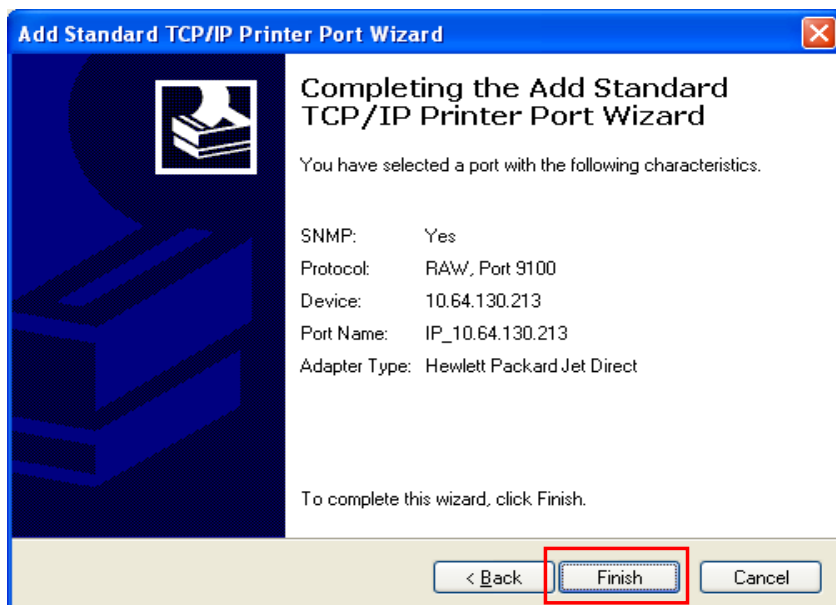
Enter the Printer Name or IP address, and a port name for the desired device.

Printer Name or IP Address: 10.64.22.200

Port Name: IP\_10.64.22.200

< Back Next > Cancel

- 9) Click "Finish"



**Add Standard TCP/IP Printer Port Wizard**

**Completing the Add Standard TCP/IP Printer Port Wizard**

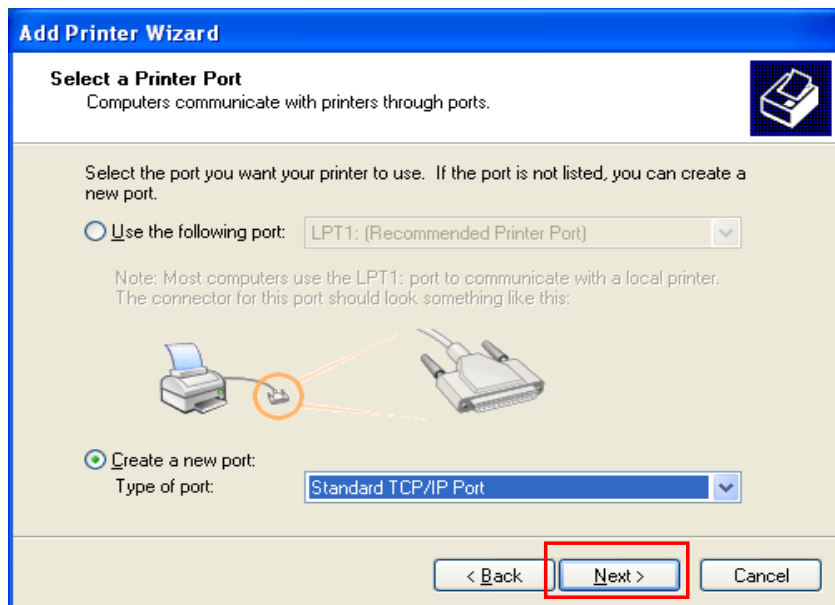
You have selected a port with the following characteristics.

SNMP:	Yes
Protocol:	RAW, Port 9100
Device:	10.64.130.213
Port Name:	IP_10.64.130.213
Adapter Type:	Hewlett Packard Jet Direct

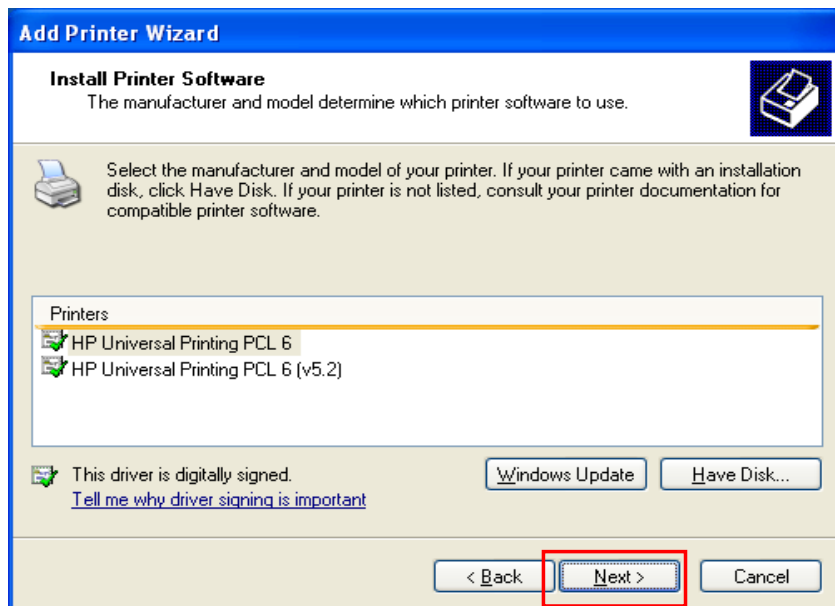
To complete this wizard, click Finish.

< Back Finish Cancel

- 10) Click "Next"



- 11) Click "Next"



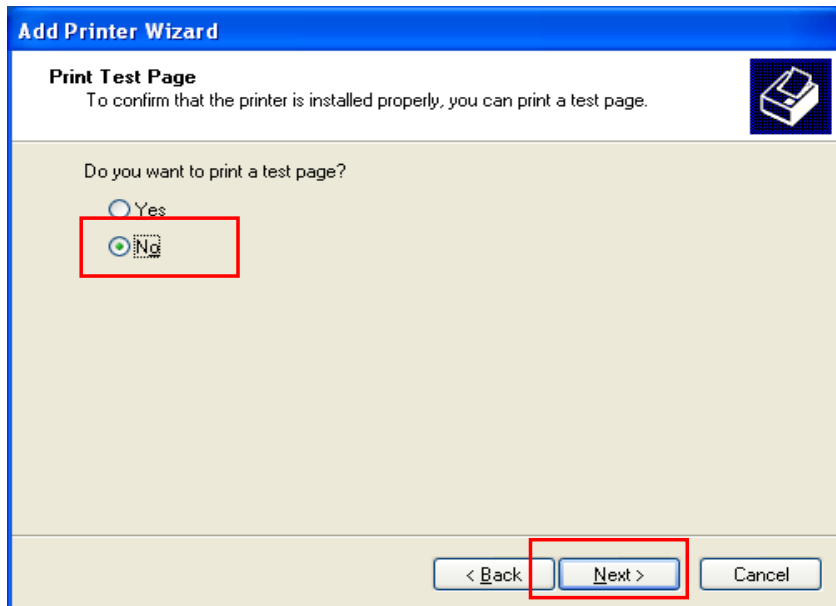
- 12) Check "Yes" for "Do you want to use this printer as the default printer?"  
Click "Next"

The screenshot shows the 'Add Printer Wizard' window with the title bar 'Add Printer Wizard'. The main heading is 'Name Your Printer' with a subtext 'You must assign a name to this printer.' and a printer icon. Below this, it says 'Type a name for this printer. Because some programs do not support printer and server name combinations of more than 31 characters, it is best to keep the name as short as possible.' A text box labeled 'Printer name:' contains 'HP Universal Printing PCL 6'. Below the text box is a red-bordered box containing the question 'Do you want to use this printer as the default printer?' with two radio buttons: 'Yes' (selected) and 'No'. At the bottom right, there are three buttons: '< Back', 'Next >' (highlighted with a red box), and 'Cancel'.

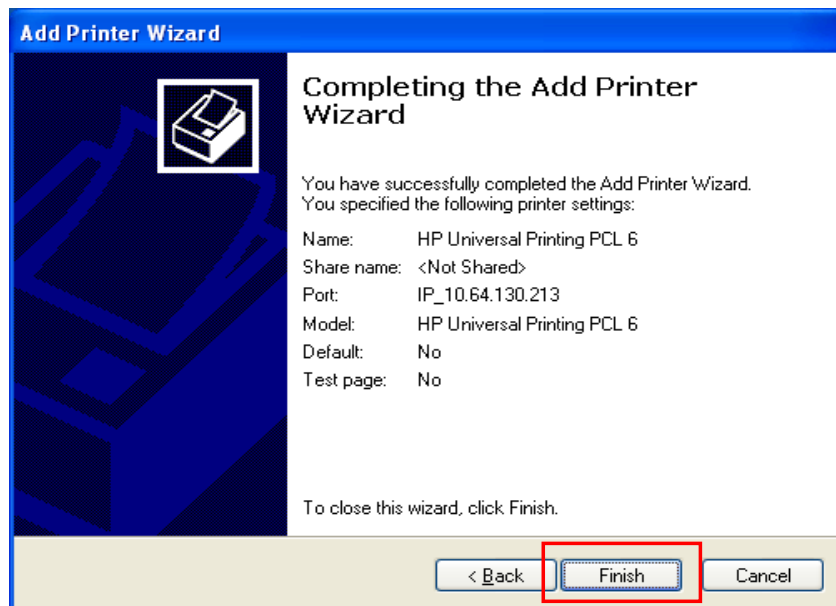
- 13) Check "Do not share this printer"  
and click "Next"

The screenshot shows the 'Add Printer Wizard' window with the title bar 'Add Printer Wizard'. The main heading is 'Printer Sharing' with a subtext 'You can share this printer with other network users.' and a printer icon. Below this, it says 'If you want to share this printer, you must provide a share name. You can use the suggested name or type a new one. The share name will be visible to other network users.' There are two radio buttons: 'Do not share this printer' (selected and highlighted with a red box) and 'Share name:' followed by a text box. At the bottom right, there are three buttons: '< Back', 'Next >' (highlighted with a red box), and 'Cancel'.

- 14) check **"No"** for "Do you want to print a test page?" and click "Next"



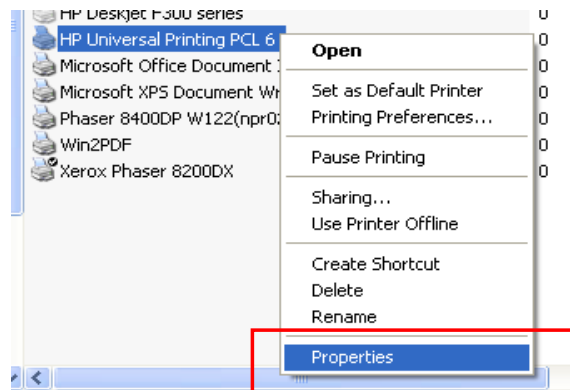
- 15) Click "Finish"



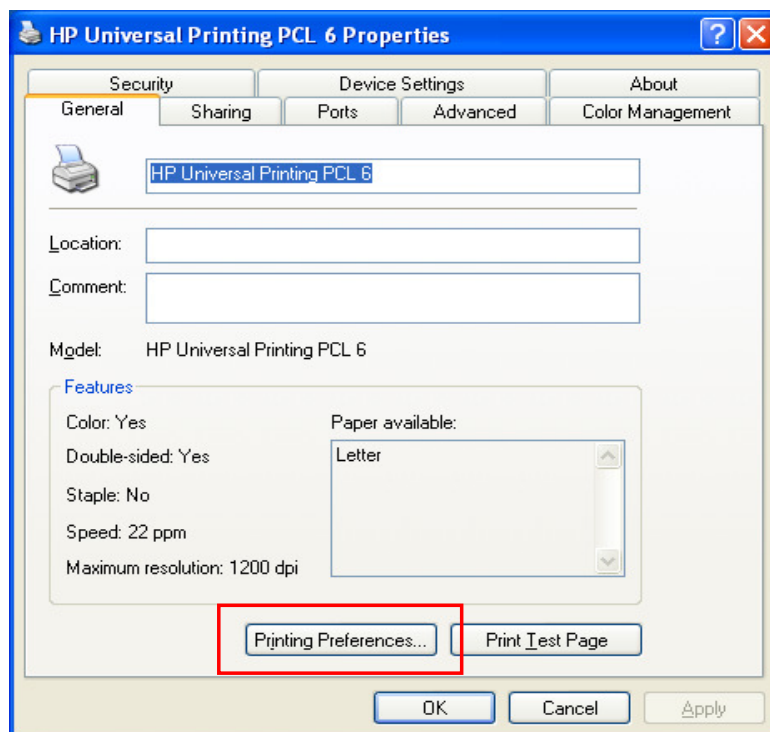


Change paper size and test print-----

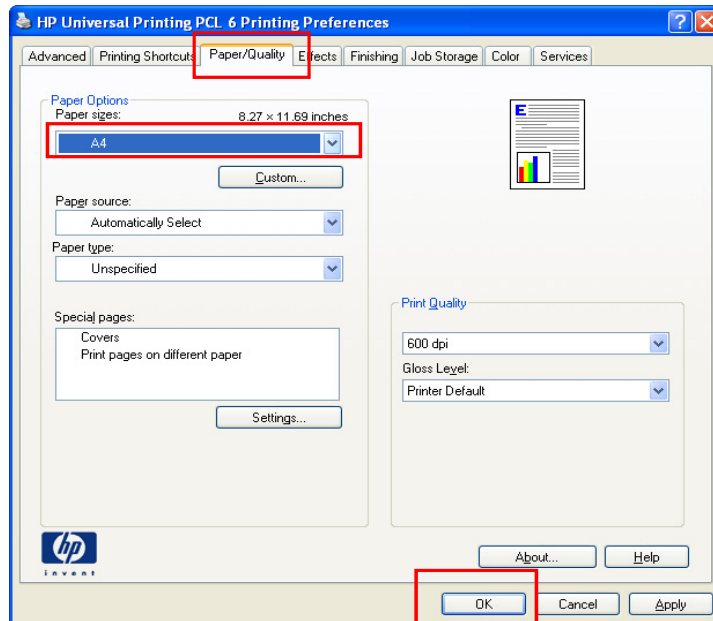
- 16) Open Properties of this Printer.



- 17) Click "Printing Preferences"



- 18) Click "Paper Quality" TAB  
Change "Paper size" to **A4**  
and click "OK"



- 19) Click "Print Test Page"  
and please confirm a result.

